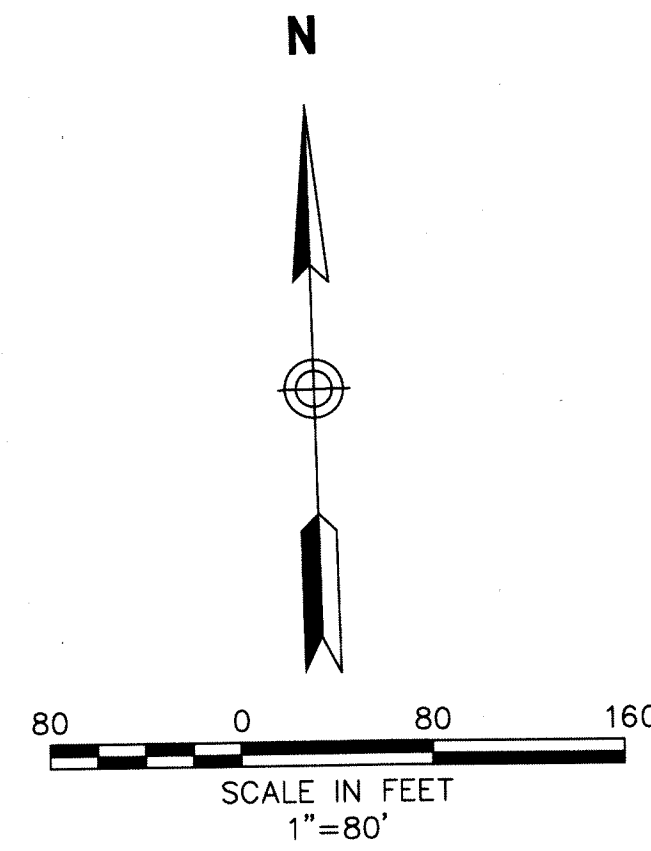


200

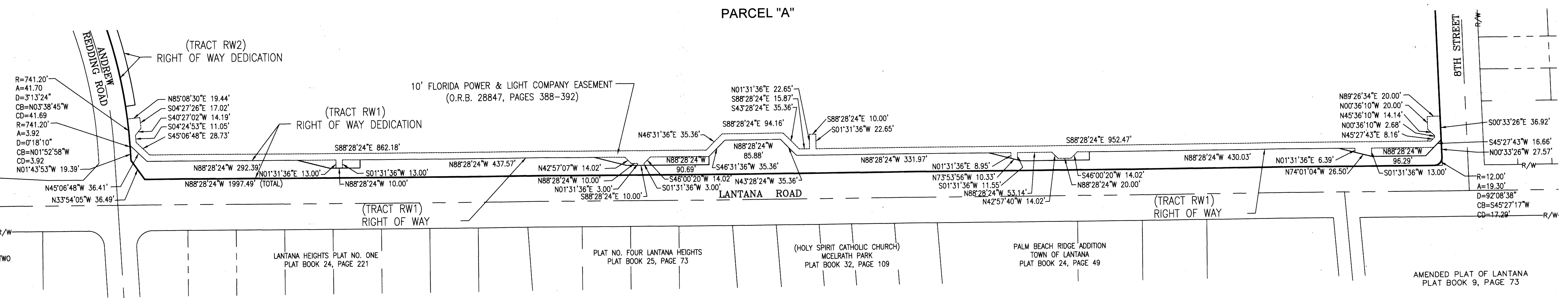
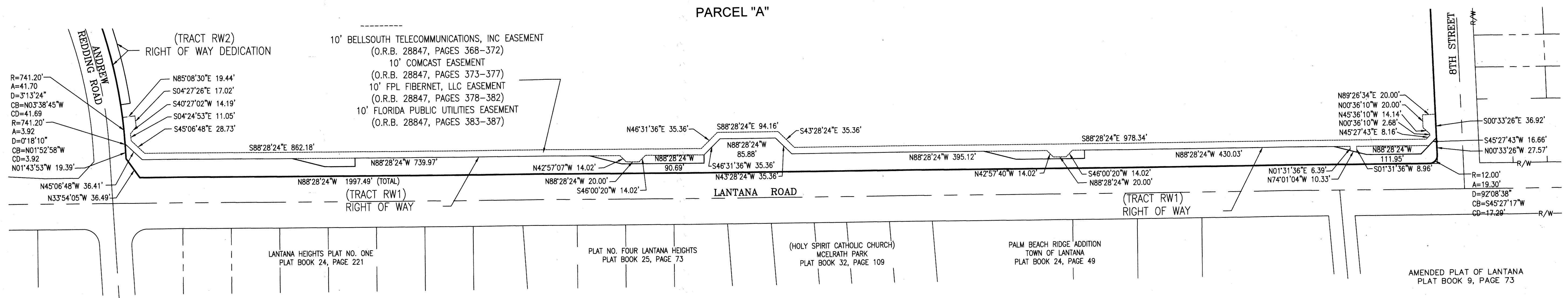
# PLAT OF WATER TOWER COMMONS

A PORTION OF SECTION 33, TOWNSHIP 44 SOUTH, RANGE 43 EAST  
PALM BEACH COUNTY, FLORIDA



STATE OF FLORIDA  
COUNTY OF PALM BEACH  
THIS PLAT WAS FILED FOR  
RECORD AT \_\_\_\_\_  
THIS DAY \_\_\_\_ OF \_\_\_\_  
A.D. 20\_\_\_\_ AND DULY  
RECORDED IN PLAT BOOK \_\_\_\_  
ON PAGES \_\_\_\_ AND \_\_\_\_  
(NAME)  
CLERK & COMPTROLLER  
BY: \_\_\_\_\_  
DEPUTY CLERK

SHEET 3 OF 3



**LEGEND AND ABBREVIATIONS**

□	SET 4"x 4" CM PERM-LB 2936	PB	PAGE
R	RADIUS	PG	PLAT BOOK
A	ARC LENGTH	R/W	RIGHT OF WAY
D	CENTRAL ANGLE	W.S.	WATER SURFACE
CB	CHORD BEARING	(NR)	NON-RADIAL LINE
CD	CHORD DISTANCE	(RAD)	RADIAL LINE
N.T.	NON-TANGENT	P.B.	POINT OF BEGINNING
LB	LICENSED BUSINESS	POC	POINT OF COMMENCEMENT
PRM	PERMANENT REFERENCE MONUMENT	P.C.	POINT OF CURVATURE
PCR	PERMANENT CONTROL POINT	P.T.	POINT OF TANGENCY
ORB	OFFICIAL RECORDS BOOK	P.R.C.	POINT OF REVERSE CURVATURE
U.E.	UTILITY EASEMENT	P.C.C.	POINT OF COMPOUND CURVATURE
D.E.	DRAINAGE EASEMENT	P.I.	POINT OF INTERSECTION
CCR	CERTIFIED CORNER RECORD		
CM	CONCRETE MONUMENT		

FOR NOTES AND LEGAL DESCRIPTION SEE SHEET 1 OF 3  
FOR PLAT SEE SHEET 2 OF 3

PREPARING SURVEYOR AND MAPPER'S STATEMENT:  
THIS INSTRUMENT WAS PREPARED BY:  
THOMAS A. ENGLISH  
PROFESSIONAL SURVEYOR AND MAPPER NO. LS6930  
CARNAHAN, PROCTOR AND CROSS, INC.  
814 SOUTH MILITARY TRAIL  
DEERFIELD BEACH, FL 33442

**CARNAHAN-PROCTOR-CROSS, INC.**  
CONSULTING ENGINEERS-SURVEYORS-PLANNERS  
814 South Military Trail, Deerfield Beach, FL 33442  
PHONE: (954)972-3959 FAX: (954)972-4178  
Certificate of Authorization: LB2936  
www.carnahan-proctor.com